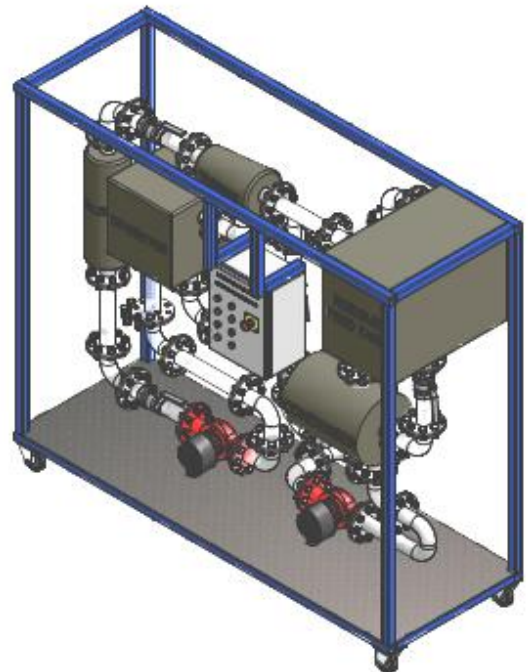
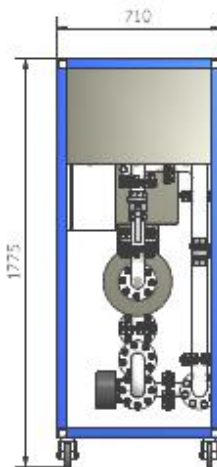
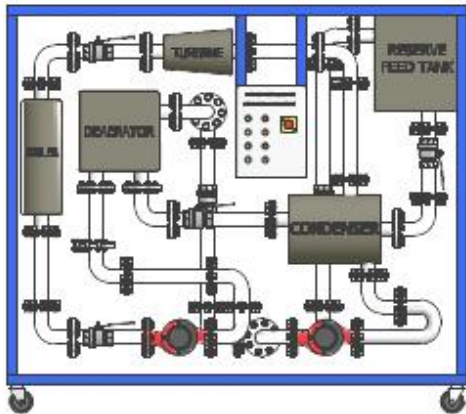
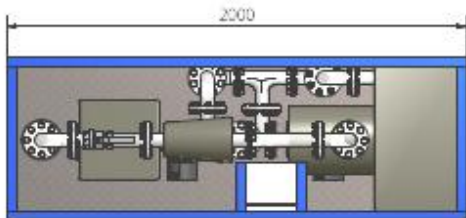


TRAINING RIG DIVISION

Condensate Rig

Designed in partnership with EDF Energy



Supporting members & wiring omitted for clarity.

DESIGNED BY Craig Stevenson	CHECKED BY	APPROVED BY	DATE	DATE 01/12/2009	
			Condensate Rig		
			BE - Heysham	FIGURE 1.0	SHEET 1 / 1

This Condensate Rig has been designed to demonstrate, in a practical manner, a flow and control system incorporating a turbine, boiler, deaerator and condenser.