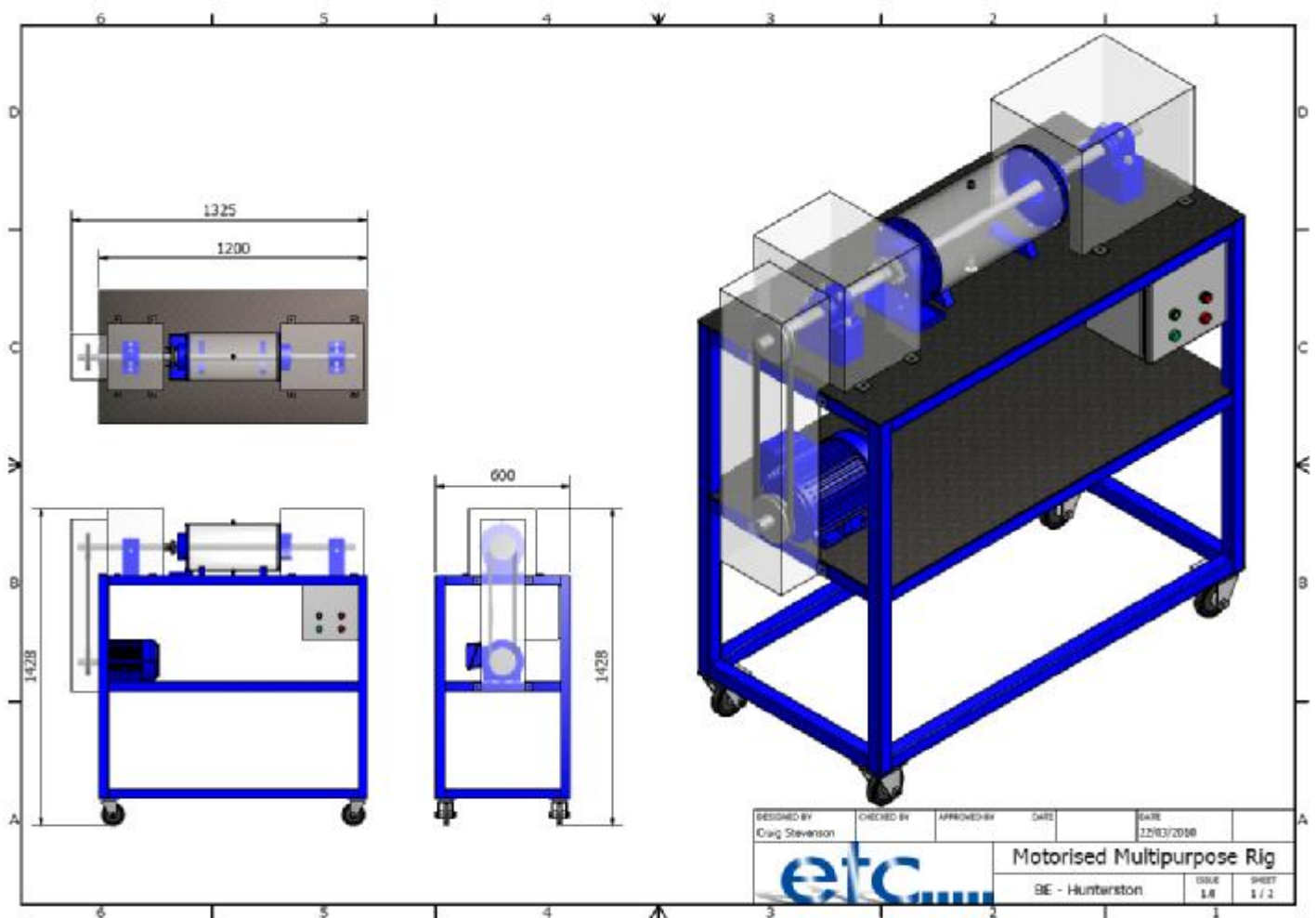




Motorised Multi Purpose Rig

Designed in partnership with British Energy



This Multi Purpose Rig has been designed to provide a motorised shaft which is mounted between 2 bearing housings complete with spherical bearings and taper sleeves. The centrally driven shaft runs through a stuffing box and a pressurised transparent chamber which can be charged with water via a bucket pump. The other side of the chamber has a mechanical seal arrangement. The unit comes complete with its own start stop isolator box and is driven by a 3 phase motor and V-Belt and Pulley arrangement. It is mounted on a box section frame with swivel, lockable, non-marking castors. The moving parts are guarded with clear lexan covers which allow the rig to be viewed whilst working.